

soliderequarterly

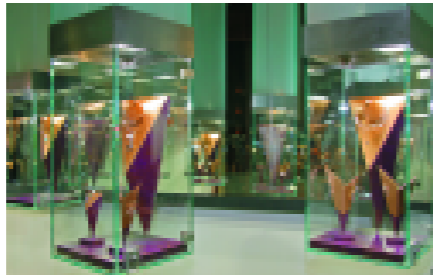
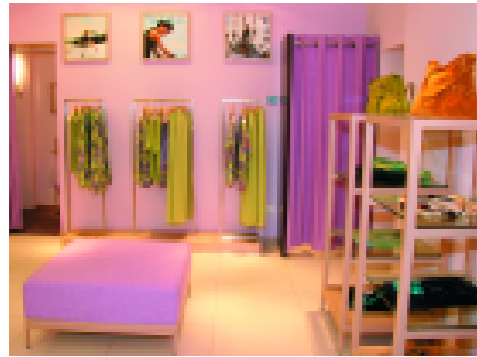
January - March 2006



SOLIDERE



newcomers and old timers

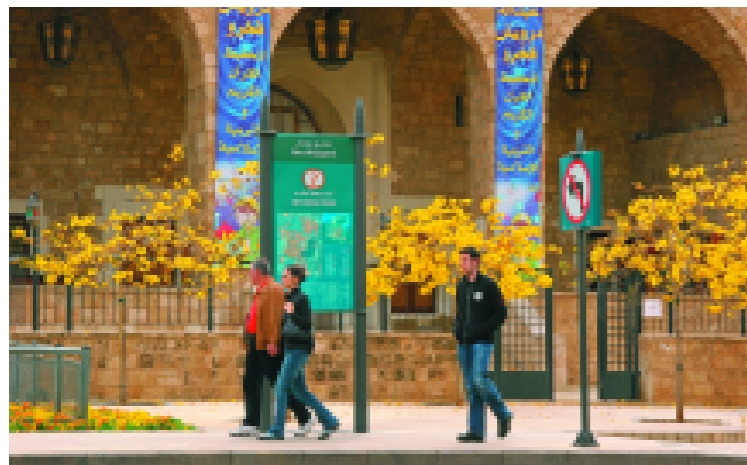


Retail

- Ceramic Lounge
- H F Fratelli, jewelry
- Lapino & Friends
- Starbucks coffee
- Story pub, restaurant
- Virnart jewelry
- Weill ladies fashion
- Zone gifts, 2nd branch

Opening soon

- Arabian Oud
- Osaka sushi lounge
- Zilli menswear, 2nd branch



Business / services

- Beirut Real Estate Management & Services
- Free Concepts interiors
- Intermarkets advertising
- Jat Airways
- Nadine Mezher couture
- Team Young & Rubicam



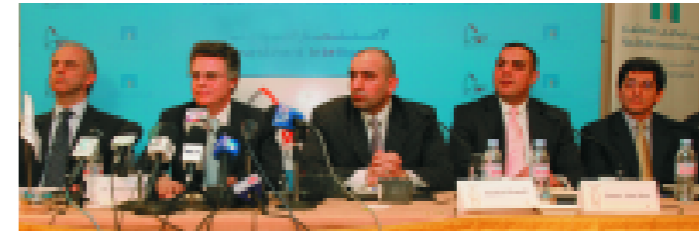
The Guide

The fourth edition of the Solidere guide was published during the quarter, with information on all banks, restaurants, retail shops, institutions, etc. It is available free of charge.

business & financial news



Architect Arata Isosaki presented to Solidere chairman Nasser Chammaa his design for Beirut Gardens, near Martyrs' Square.



New investors' projects

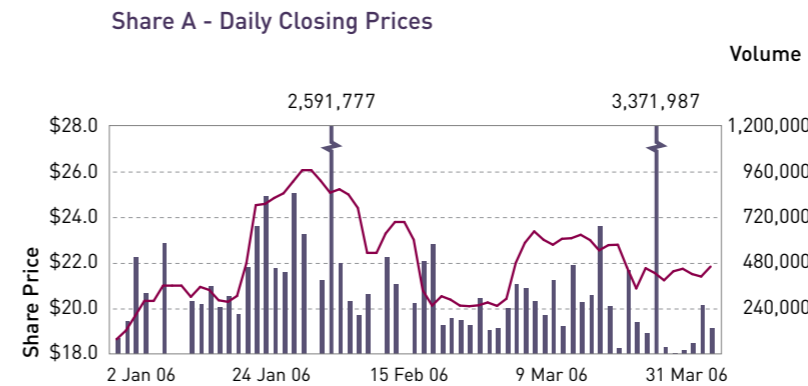
Important real estate projects are to follow the sales of land for development that were agreed during the quarter. These total US\$1.12 billion. New transactions amounting to around US\$300 million are under negotiation.



Beirut Gate: heading an Abu Dhabi Investment House team, Mr. Rashad Janahi at his press conference with Messrs. Chammaa, Douaidy, Solh.

Phoenician Village: contract signing, Messrs. S. Al Sayer and S. Al Mayal with M. Hammoud.

Share performance during the 1st quarter



Solidere shares continued their strong thrust during the quarter, in the wake of their impressive record in 2005, and in view of market expectations of strong financial results in 2005 and 2006.

Share A traded between a low of US\$18.61 and a new high of US\$26.01, closing the quarter at US\$21.79, 21.19% over the previous quarter closing.

Around 35 million shares of both classes were exchanged during the period, a more than twofold increase over the previous quarter.



Share B traded between a low of US\$18.50 and a high of US\$25.89, closing the quarter at US\$21.66, a 20.46% increase over the previous quarter closing.

Shares traded in the Kuwait Stock Exchange followed the trends in the local market. The GDRs, traded in the London Stock Exchange, closed the quarter at around the US\$21.87 level, a 28.64% increase compared to the previous quarter closing.

— Share price (US dollars)
— Trading volume

Right, Beirut souks under construction, below, Solidere chairman Nasser Chammaa and his team with architect Rafael Moneo.



New development

Signs of development from sea to sky, tall cranes, lifting equipment, excavators, and bulldozers are all vigorously working together to complete the ongoing new projects in Beirut city center.

The Beirut Souks, starting with the South Souks, are forging ahead on schedule. So are many hotel, multiuse, residential and office blocks or towers mushrooming near the Souks, around the waterfront, in Mina El Hosn, Saifi, Wadi Abou Jamil and Zokak El Blatt residential areas, all part of Phase II of the city center redevelopment.

Beirut Broadband

Solidere is launching Beirut Broadband Network (BBN). The building of the network will commence by end March 2006, with a target to start operation by year end. Thanks to a high bandwidth, the network will provide to users a wide range of internet and multimedia services. The demand-driven growth is to make BBN a hub of networks on the national territory.

February 14

Once again, Martyrs' Square was reclaimed as a public space for honoring Rafic Hariri, martyred a year ago. Huge crowds thronged to the city center, in unison they stood in silence in Martyrs' Square, remembering the man whose vision of rebuilding the city center came to fruition.



National dialogue

The city center, as the seat of parliament, was the chosen location for the national dialogue meeting, which took place over a period of several days in the month of March.



Investors' roadshows and conferences

A Solidere investors' roadshow was organized by EFG Hermes in the US, the UK and the Gulf January 23-28 .

The Company's progress, performance and future plans were presented at the roadshow.

The purpose of the roadshow was a secondary offering of Solidere shares, contributed by existing shareholders, to enhance liquidity in the share on the Beirut stock market.

The secondary offering of 4,150,000 Solidere shares for a US\$94 million value, was more than four times oversubscribed.

Chairman-general manager Nasser Chammaa visited the KSA and other Gulf countries, meeting with many investors and financial institutions.

Messrs. Chammaa and Douaidy attended the EFG Hermes conference, held in Sharm Al Sheikh March 5-8. The conference gathered a large number of regional companies, fund managers, international, regional and gulf investors. Solidere had participated in this same conference in 2004.

General manager Mounir Douaidy visited New York, Boston and London, holding one-on-one meetings with no less than 35 fund managers.



Japan Center for ME studies

Recently established in Lazariéh building, the Japanese Center for Middle Eastern Studies was officially inaugurated by Japan's ambassador Tokumitsu Murakami and Setsuho Ikehata, president of the Tokyo University of Foreign Studies. Lebanese minister of culture Tarek Mitri attended the ceremony, held at the Press Club on February 1.

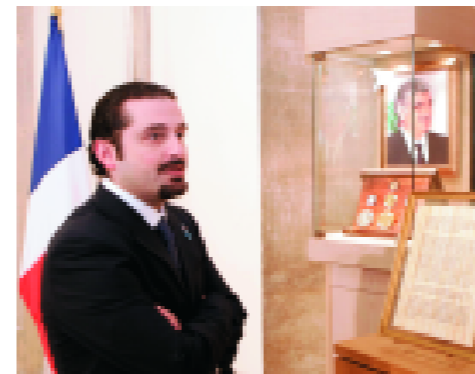


Rafic Hariri commemoration medal

Banque du Liban (BDL) issued a medal in commemoration of the late Rafic Hariri.

A ceremony took place on this occasion at Paris' Hotel de la Monnaie on February 4. It was attended by President Chirac, Mmes Bernadette Chirac and Nazek Hariri, Mr. Saad Hariri and members of the family; and a number of Lebanese and French officials, including French minister of economy

Thierry Breton, BDL governor Riad Salamé, Lebanon's ambassadors to France and UNESCO Sylvie Fadlallah and Samira Daher, and Solidere chairman Nasser Chammaa. The medal features a portrait of Mr. Hariri and was minted in limited edition in gold, silver and copper. It was designed by Ramla Chamma'a, of the Solidere corporate reporting and publications team.



exhibitions and events



Planet Discovery exhibition hall

Solidere uses the exhibition hall to exhibit prominent artists' work.

Under the Artists-in-residence program: Omar El-Nagdi, magician of colors used for humanist and mystic expressions, January 5-29, Ali Kaaf, a student of Marwan Kassab- Bachi, merged light and dark in his own artistic style, February 9 – March 4.

With Fadi Moghabghab gallery: Marwan Sahmarani's first exhibition in Lebanon featured large paintings and 60 caricatures of politicians, covering 15 years of the artist's work, March 9-31.



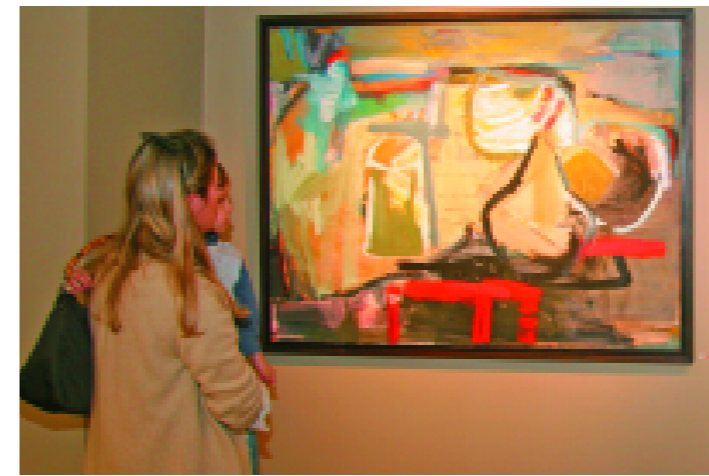
Other galleries

Aida Cherfane
Collection of paintings and sculpture, January 1-31, Paintings by Renée Fawaz, February 10-March 3, *Falling Angels*, paintings by Marcello Carrozzini, March 10-21.

On/Off
LUFFA lighting exhibition, Wyssem Nochi and Cecile Nochi, January 1-20.

Sehnaoui building gallery
Trois pinceaux venus d'ailleurs by Peter Panyoxcki, Alberto Reguera and Eugenia Burgo, January 1-31.

Virgin Megastore
Lebanon, a wonderful country, photographs, competition winners and entries, organized by the ministry of tourism, March 9.



Books, lectures, etc.

Virgin Megastore
Tapas Cycle, booksigning by Claude Awkar, February 16.

El Bourj bookstore
Poems and stories for children in Arabic and French, read by Nisrine Ojeil, March 4 and 25, Poetry reading by James Sacra and Rita Baddoura, March 6.

Planet Discovery
Children's art exhibition from the book *Lebanon A to Z: A Middle Eastern Mosaic*, February 2-28, *Tine et Zbib* puppet show, Friday, Saturday afternoons.

Souk El Tayeb
Books from Lebanon, February 25.

Other events

BIEL
Wedding folies, January 11-15, Lines of Fashion, March 2-4, Horeca hospitality exhibition, March 21-24.

Music Hall
Jack the Ripper, musical cabaret, January 15, Omar Sosa trio and Mina Agossi trio in Liban Jazz Musichallogies, January 26, Roy Ayers and Gregski, March 2, Olivia Ruiz, March 5.

UN House
Eight conferences were held at ESCWA this quarter.



Painting exhibitions by Omar El Nagdi, Ali Kaaf, Marwan Sahmarani.



Painting exhibitions by Nada Hobeiche Sidani, Leila Beydoun Chalabi, Marcello Carrozzini, Renée Fawaz.

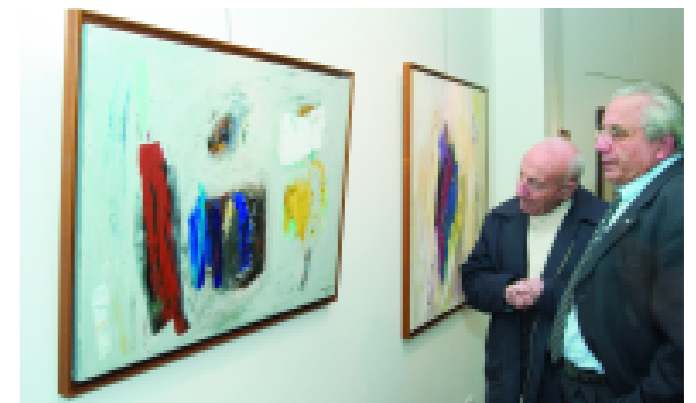
Quartier des Arts

Pièce Unique
Omar El-Nagdi, Alain Le Yaouanc, Nisa Chevènement, January 1-25.

Rochane
Leila Beydoun Chalabi, January 26 - February 9, Nada Hobeiche Sidani, February 23 - March 7, Aurore Selwan, March 22 - April 4.

Epreuve d'Artiste
Paintings from its permanent collection, January 1-30.

Alwane
Paintings from its permanent collection, until March 31.



in and about the city center

Left, Nestlé Nespresso delegation with sales division manager Mounib Hammoud.

Right, SynergoF delegation with Solidere general-manager Mounir Douaidy.



Visitors

Businessmen / delegations

Azzam Abaalkhail, chairman Albilad bank, Saudi Arabia; Gerhard Berssenbruegge, Nestlé Nespresso Switzerland chairman, heading an eight-member delegation, with Jean Zoghzi, director of Dima Lebanon; Sung Lee, director MEC Trade, Korea, with Miss Eun Lee; investor Albert Jamo, Paris; Bruno Pepin, Beaune wine exporter, France; Sara Hanks, Clifford Chance law firm, New York; high-ranking representatives of Nike Holland; Colin Clinton, senior engineer with five members, ARUP Engineering UK; 20 international financial advisors, Man Investments; SynergoF Global Philanthropist Circle delegation with Yousef Dib, BNP Paribas.

Academics / Professionals

Francine Henrich curator Omar Al Nagdi museum Paris; head of Stuttgart city planning office Albrecht Klenk; Gaetan Siew, Jordi Farrando, Amir Turki and Martin Drahovsky, with a 40-member International Union of Architects delegation; Fred Koetter and Giles Moore, Koetter Kim Associates, US; Stéphane Lutard, French Architects Overseas; Andrew Bromberg and Helena Lee, architects, Aedas, Hong Kong; Lynn Sneige Keyrouz with 10 writers from British Council arts critic mentoring program; professor Dagmar Reichert with 30 geography students, Kassel university, Germany; Euromed Marseille - Ecole de Management MBAs; Christoph Wessling, Insar urban and regional planners, Berlin, with 30 architecture students.

Media

Swedish photographer Bruno Ehrns; Peter Lachnit, Austrian broadcasting corporation radio and television; photojournalist Konrad Lau, US; deputy-director Jayho Han heading a Korean Broadcasting System team; Christian Schule, Die Zeit-GEO magazine, Germany; 20 journalists and three from TV5, Italy; Darrel Hartman, assistant editor, Travel and Leisure Magazine, US; three journalists from Business Outlook - Time, UK.

Conferences / publications

Architecture and Tourism was the title of a lecture by Raphael Sabbagha, secretary-general of the Solidere board of directors, at a conference on 'Intermediary Cities' held by the International Union of Architects (UIA) and the Order of Engineers and Architects, March 8-9

'Global cities, city-to-city cooperation, and city networks for post conflict development', lecture, American University of Beirut, February 28.

Martyrs' Square Grand Axis of Beirut: the design competition and its aftermath, was the subject of two presentations, by urban division manager Angus Gavin and Roueyda Ayache, competition jury member and partner in Architecture Studio, Paris, at ALBA's conference 'Development: from City to Coastline', February 21.

'Modern Architecture: a Heritage', conference and exhibition, Order of Engineers and Architects, March 28.

History, Space and Social Conflict in Beirut - The Quarter of Zokak el Blat, published by Orient Institute in Beirut. Co-authored by Hans Gebhardt, Dorothee Sack, Ralph Bodenstein, Anne Mollenhauer, Jens Hanssen, Friederike Stolleis, Bernhard Hillenkamp, Andreas Fritz, Oliver Kugler, the book deals with the issue of preserving historic quarters.

The Lebanese Company for the Development and Reconstruction of Beirut Central District, s.a.l.

P.O.Box 119493
Beirut 2012 7305, Lebanon
Tel. 01 980650/980660
Fax 01 980661/980662
solidere@solidere.com.lb
www.solidere.com

new development - mina el-hosn



Beirut Waterfront Development

Platinum Tower

Beirut Tower

Dib Tower

Marina Tower

Town Tower

Marina Garden

New Beirut Tower

Capital Plaza

Garden View

Rotana Hotel

Park Venture

Avenue Venture

Hilton Hotel

Berytus Parks

Trust Construction

Capital Gardens

Avenue Plaza

Banamo Foncía

Damac Properties Lebanon

Stow Wadi

DBA 1

DBA 3

DBA 2

Royal Hotel and Resorts

Med Invest

Beirut Village 2

Beirut Village 1

Mira Immobilière

The Courtyard

New Zone Real Estate

Greenline Real Estate